



Biomass Silo Systems

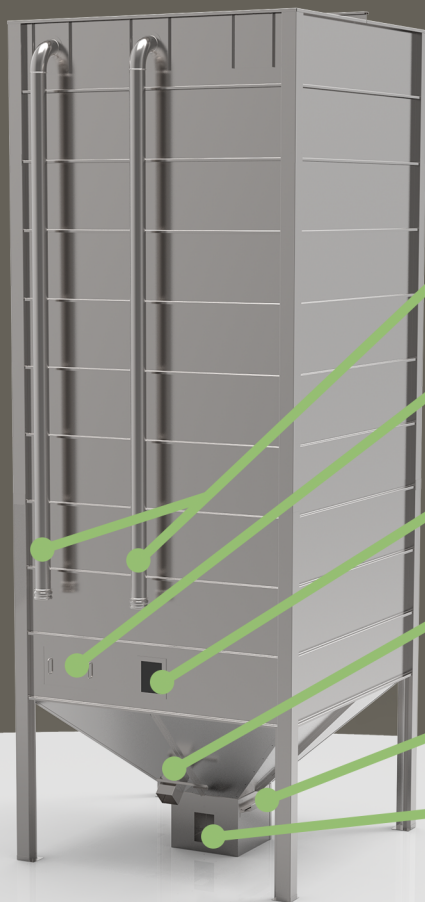
W1022 - 10 Ton Pellet Store

This 2m square footprint silo provides a robust, reliable and cost effective means of storing your wood pellet fuel and can come in both indoor and outdoor models. Manufactured from galvanised steel they are designed to be flat packed allowing them to be delivered direct to site for quick and easy assembly.

The feed outlet is suitable for either auger or vacuum extraction and a range of optional extra's allow users to customise the silo to their exact requirements.

Product Code	W1022
Footprint	2m x 2m
Height	5.404m
Volume	16.996m ³
Useful Capacity	11.05 Tons
Flat Packed Dimensions	(L)2500mm x (W)1250mm x (H)1000mm
Empty Weight	675kgs
Approx Assembly Time	10 hours for two people

Standard Features



Bulk Delivery Connections

Filling and ventilation pipework with delivery connections

Bag Filling Panel

For bag filling and periodic cleaning and maintenance

Inspection Window

For checking pellet levels

Manual Extraction Chute

For withdrawing pellets can be positioned on any side

Feed Shut Off Slide

To isolate feedbox during cleaning filling or maintenance

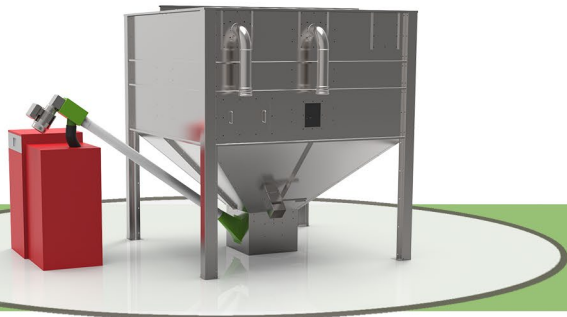
Feed Outlet

Choice of standard auger or vacuum feed outlets

Dust Removal Panel

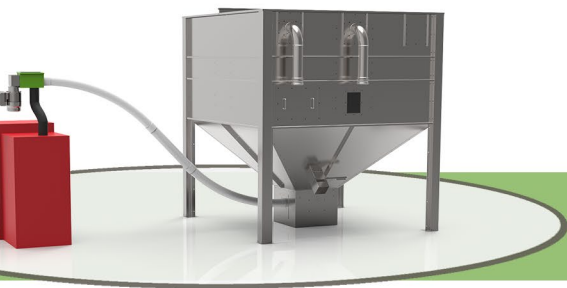
For removal of dust from silo

Feed Options



Rigid Auger

A straight 3-5m straight auger collects pellets from the outlet and feed direct to the boilers day hopper



Flexible Auger Direct to Boiler

These augers are supplied with 45 degree bends (x2) and come in lengths from 3-10m allowing increased flexibility in the auger run

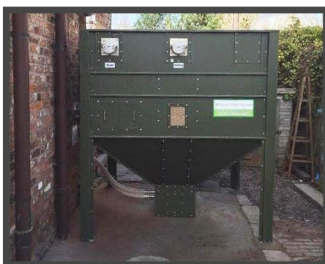


Vacuum System

A vacuum extraction probe allows for pneumatic extraction of the pellets to the boilers day hopper

Optional Extras

Greencoat Finish



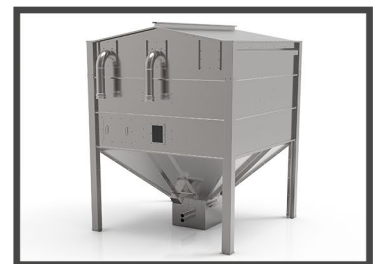
PVC coated finish gives the product a 30 year outdoor life

Timber Cladding Kits



Treated timber cladding panels to help give the silo a more natural look

Apex Roof



Optional roof design for use in areas that experience high snow loads